

The data set (and description) can be downloaded here:

<http://stat.ethz.ch/Teaching/Datasets/baby.dat>

Description:

```
TITLE : baby
KEYWORDS (statist) : logistic regression, GLM
SHORT DESCRIPTION :
    survival of low birth-weight preterm babies.
    It is a retrospective study of 247 Babies
    (Hibbard, 1986).
DIM.(VAR./OBS.) : 6 / 248
/ LITERATURE : /
    Data are taken from (at that time) docent
    Alan welsh; see (Hibbard, 1986).
```

Descriptive statistics:

Dataset= baby : n= 247 , d= 5

Class1: n= 161

Covariance matrix:

	[,1]	[,2]	[,3]	[,4]	[,5]
[1,]	46526.0656	260.7372	115.5194	76.3682	-1.2943
[2,]	260.7372	5.8575	0.8668	0.6101	-0.0212
[3,]	115.5194	0.8668	4.5026	2.7372	0.0458
[4,]	76.3682	0.6101	2.7372	2.7723	0.0248
[5,]	-1.2943	-0.0212	0.0458	0.0248	0.0064

Correlation matrix:

	[,1]	[,2]	[,3]	[,4]	[,5]
[1,]	1.0000	0.4995	0.2524	0.2126	-0.0750
[2,]	0.4995	1.0000	0.1688	0.1514	-0.1096
[3,]	0.2524	0.1688	1.0000	0.7748	0.2700
[4,]	0.2126	0.1514	0.7748	1.0000	0.1860
[5,]	-0.0750	-0.1096	0.2700	0.1860	1.0000

Median: 1200.014 29.8982 4.8073 6.3486 7.3135

Mean: 1176.056 28.8944 5.0994 6.5652 7.3191

MCD-estimated:

MDC-0.975-Mean: 1207.985 29.1343 5.2015 6.7836 7.3193

MDC-0.750-Mean: 1199.044 29.1029 5.2279 6.7721 7.3192

MDC-0.500-Mean: 1209.627 29.0746 5.1642 6.7612 7.3181

Class2: n= 86

Covariance matrix:

	[,1]	[,2]	[,3]	[,4]	[,5]
[1,]	60409.2886	372.0342	153.9343	134.9412	-0.3335
[2,]	372.0342	6.6010	0.0457	0.5000	-0.0692
[3,]	153.9343	0.0457	4.7415	3.1176	0.0728
[4,]	134.9412	0.5000	3.1176	4.6765	0.0358
[5,]	-0.3335	-0.0692	0.0728	0.0358	0.0108

Correlation matrix:

	[,1]	[,2]	[,3]	[,4]	[,5]
[1,]	1.0000	0.5892	0.2876	0.2539	-0.0130
[2,]	0.5892	1.0000	0.0082	0.0900	-0.2587
[3,]	0.2876	0.0082	1.0000	0.6621	0.3212
[4,]	0.2539	0.0900	0.6621	1.0000	0.1590
[5,]	-0.0130	-0.2587	0.3212	0.1590	1.0000

Median: 820.0595 26.1705 2.8111 5.2294 7.3307

Mean: 884.6512 26.4302 3.814 5.5 7.3301

MCD-estimated:

MDC-0.975-Mean: 881.2687 26.0896 4.1642 5.5075 7.3525

MDC-0.750-Mean: 886.9286 26.2 4.0429 5.5286 7.3506

MDC-0.500-Mean: 881.2687 26.0896 4.1642 5.5075 7.3525

Measures:

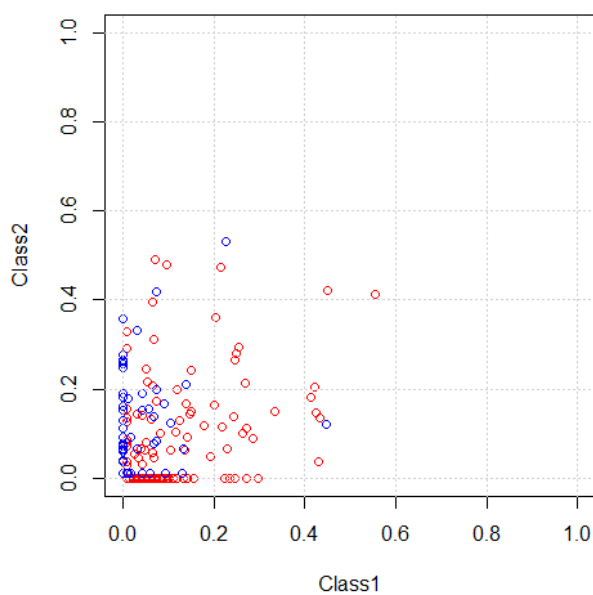
Mah.Dist: 1.3749

Mah.Dist-MCD-0.975: 1.5963

Mah.Dist-MCD-0.750: 1.5963

Mah.Dist-MCD-0.500: 1.5963

DD-Plot (zonoid): baby



DD-Plot (random Tukey): baby

